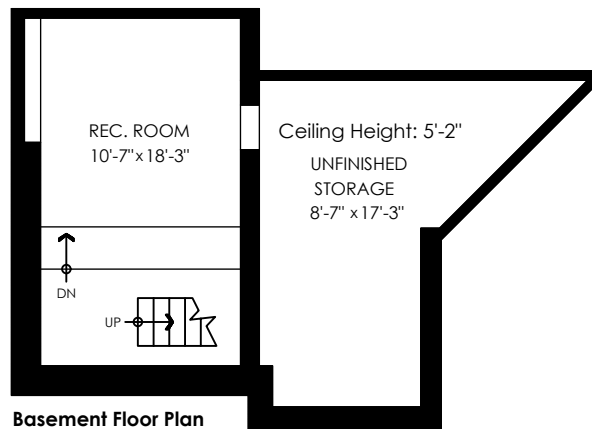
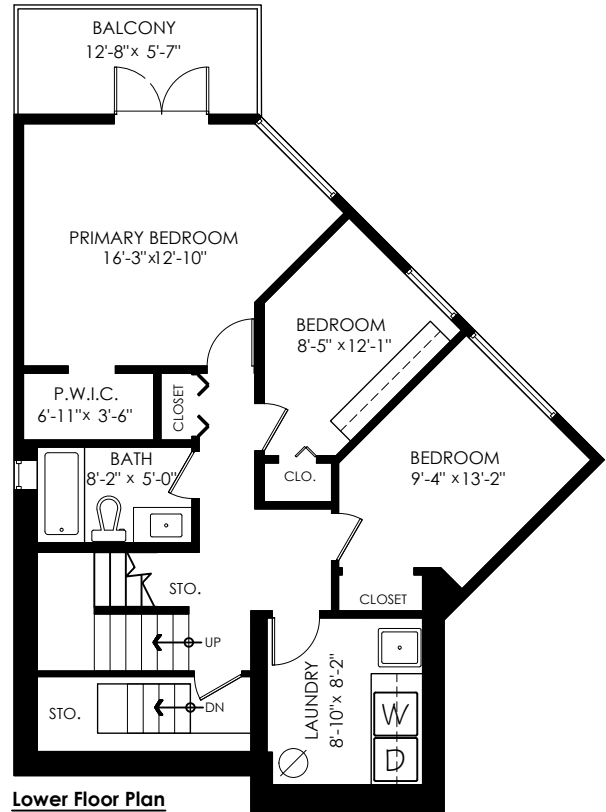
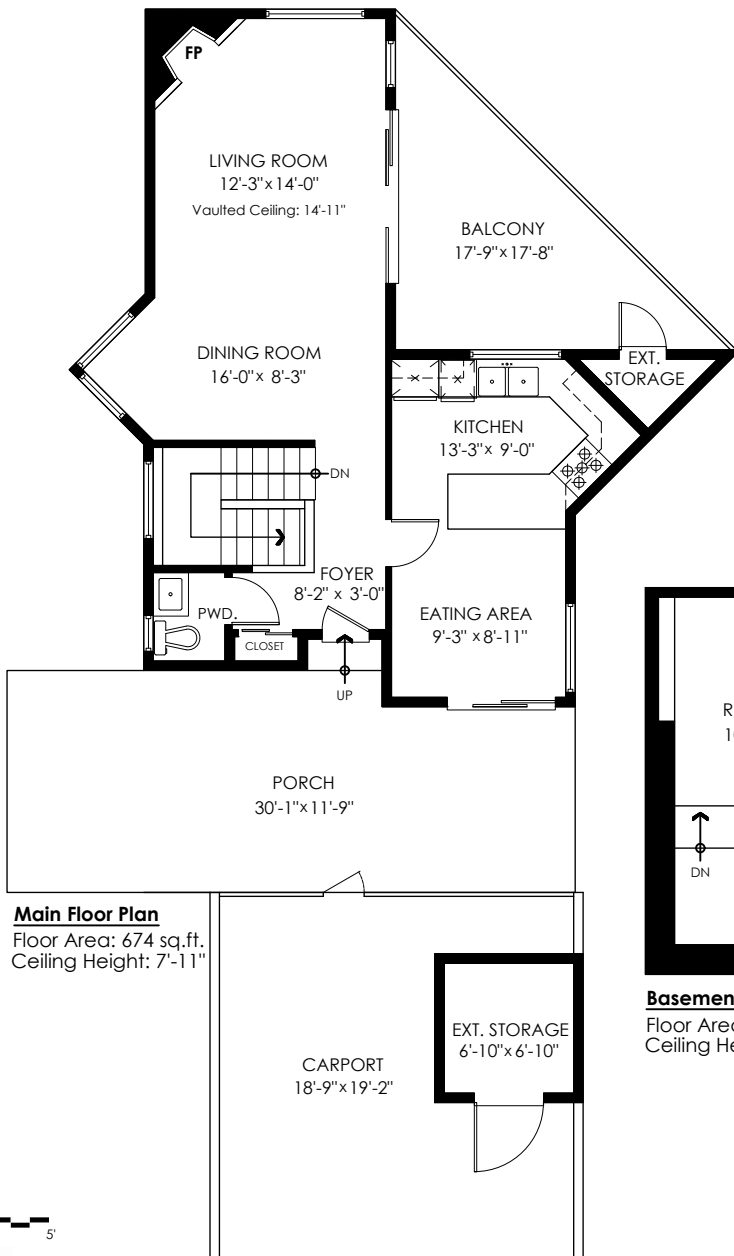


1243 Mill St North Vancouver

Main Floor: 674 sq.ft.
 Basement Floor: 269 sq.ft.
 Lower Floor: 841 sq.ft.
Total Livable: 1,784 sq.ft.

Unfinished Floor: 225 sq.ft.
Grand Total: 2,009 sq.ft.

Carport: 322 sq.ft.
 Ext. Storages: 83 sq.ft.
 Balconies: 71 sq.ft.
 Porch: 340 sq.ft.
Total Extras: 816 sq.ft.



info@pixlworks.com www.pixlworks.com 604.329.5788



E&O Insured. Total square foot calculated to gross unit area. SQFT based on interior measurements to exterior walls, not taken from original blueprints, may include unfinished area. This is for marketing purposes only and is not intended for architectural/construction use. All details, sizes & placements should be considered approximate within +/- 2% tolerance.