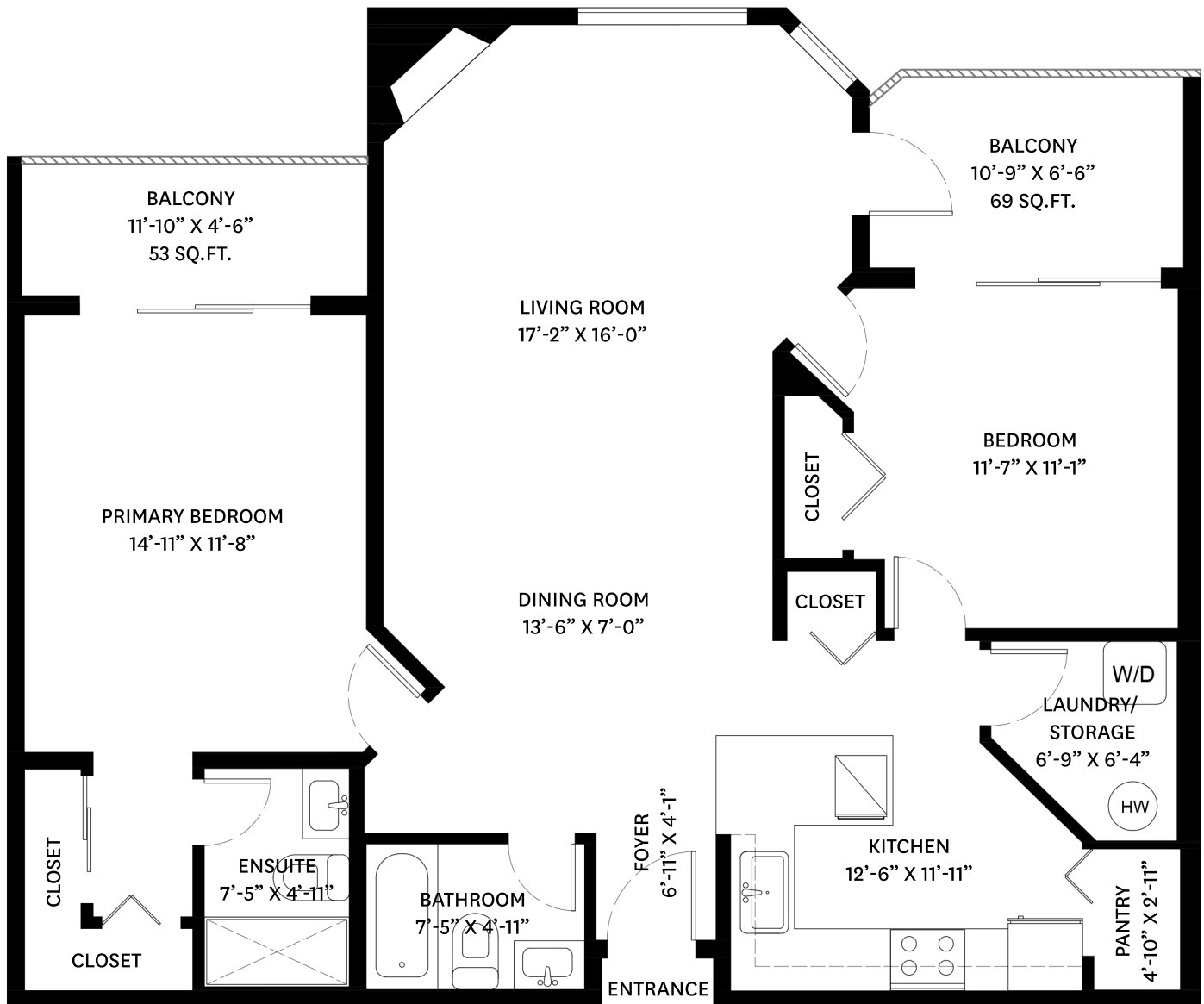
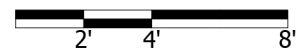


207-1955 SUFFOLK AVENUE, PORT COQUITLAM, BC

MAIN FLOOR TOTAL: 1,129 SQ.FT.
BALCONY TOTAL: 122 SQ. FT.



MAIN FLOOR PLAN
Ceiling Height: 7'-11"



Craig Johnston
604-202-6092
craig@themacnabs.com

floor plan designed by
ishot.ca Enterprises Inc.
604-368-7979
http://ishot.ca

THE FLOOR PLAN ILLUSTRATION IS NOT SUITABLE FOR CONSTRUCTION/ ARCHITECTURAL PURPOSES.
MEASUREMENTS ARE APPROXIMATE AND MAY NOT BE TO SCALE. E&O INSURED.