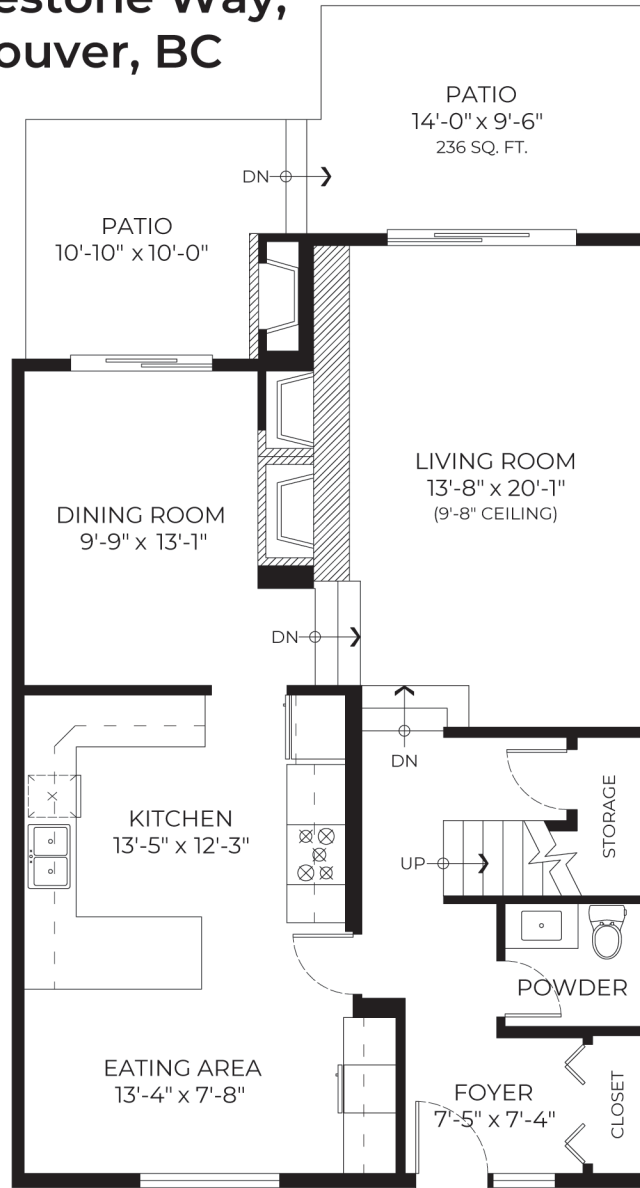


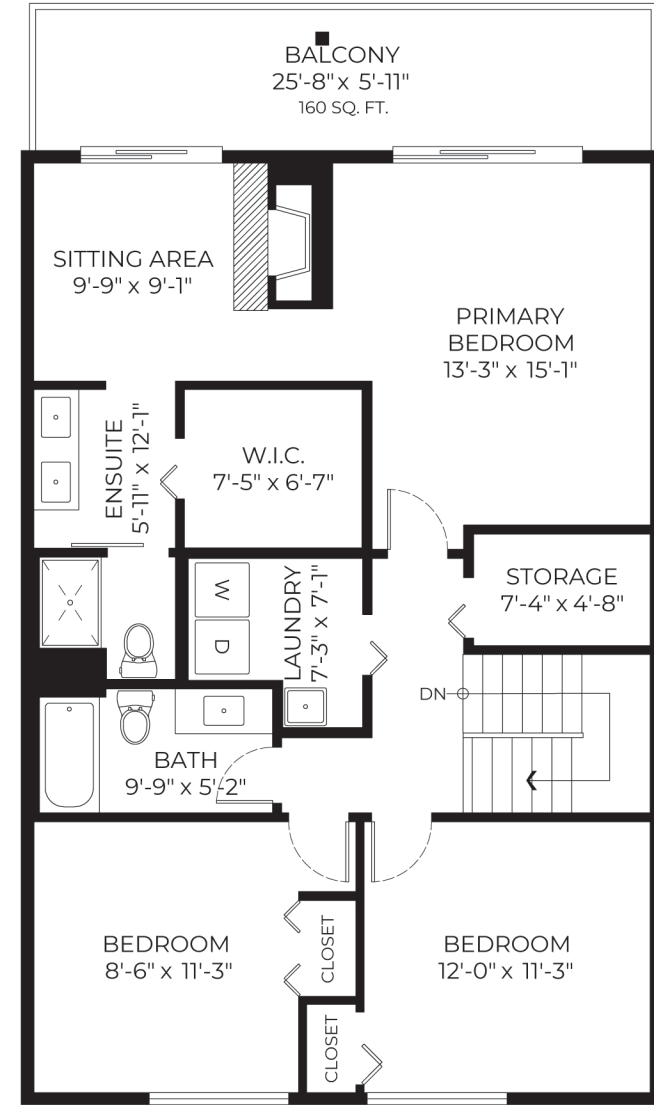
# #35-2216 Folkestone Way, West Vancouver, BC

Upper Floor: 1064 SQ. FT.  
 Main Floor: 1010 SQ. FT.  
**Total: 2074 SQ. FT.**

Balcony: 160 SQ. FT.  
 Patio: 236 SQ. FT.



**MAIN FLOOR PLAN**  
 Ceiling Height: 8'-0"



**UPPER FLOOR PLAN**  
 Ceiling Height: 8'-0"

