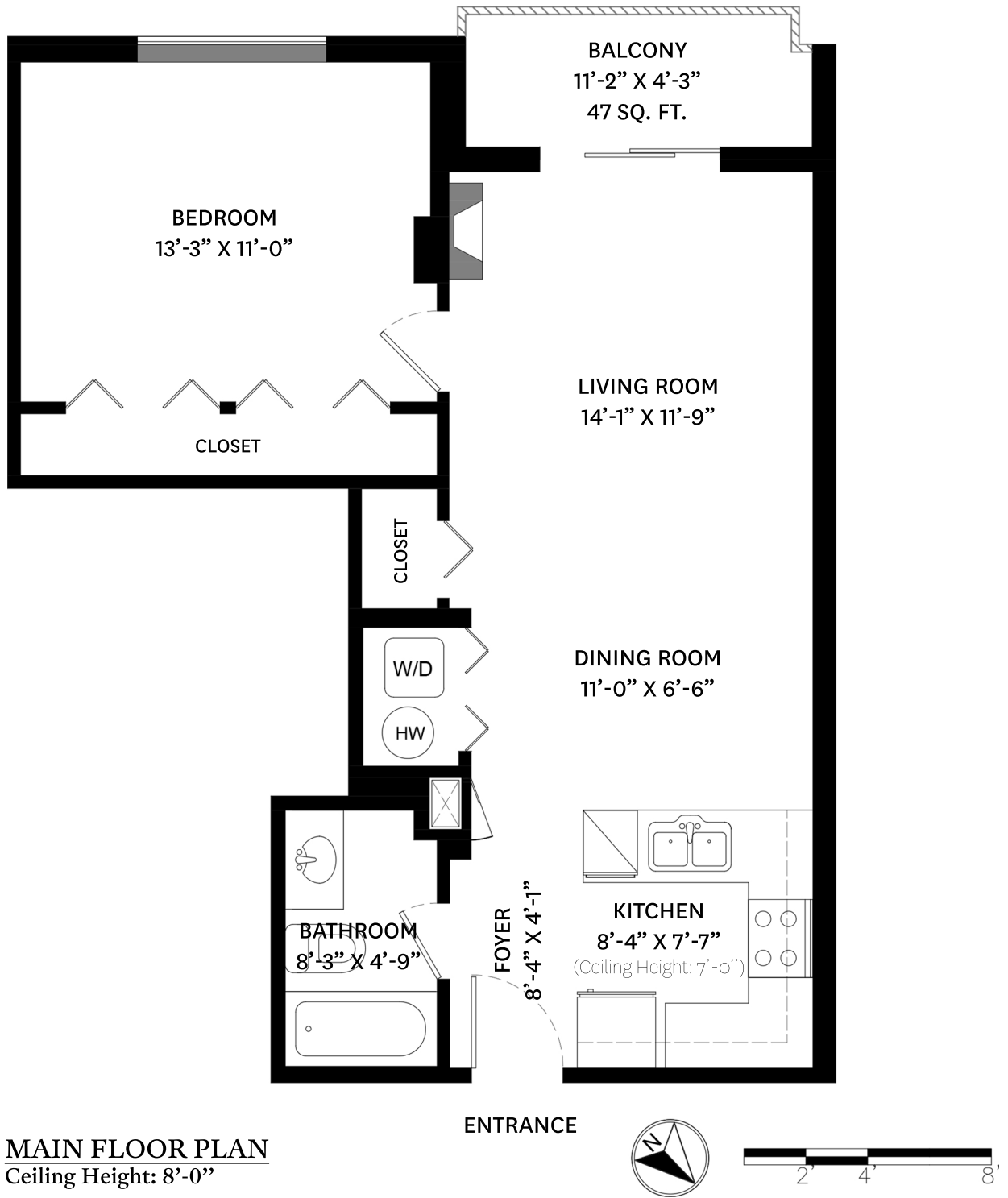


# 408-200 KEARY STREET, NEW WESTMINSTER, BC

**MAIN FLOOR TOTAL: 663 SQ. FT.**  
**BALCONY: 47 SQ. FT.**



**Craig Johnston**  
604-202-6092  
craig@themacnabs.com

THE FLOOR PLAN ILLUSTRATION IS NOT SUITABLE FOR CONSTRUCTION/ ARCHITECTURAL PURPOSES.  
MEASUREMENTS ARE APPROXIMATE AND MAY NOT BE TO SCALE. E&O INSURED.

floor plan designed by  
ishot.ca Enterprises Inc.  
604-368-7979  
<http://ishot.ca>